



23 Lidgett Park Grove, Leeds, LS8 1HW

Available 1st April 2026 - A four bedroom, two bathroom, semi-detached luxury home in Roundhay.

This part-furnished house comprises a living room with a bay window, with a second reception area accompanying the kitchen to the rear. A utility and downstairs WC are accessed through the kitchen, which also benefits from bi-folding doors to the enclosed rear garden.

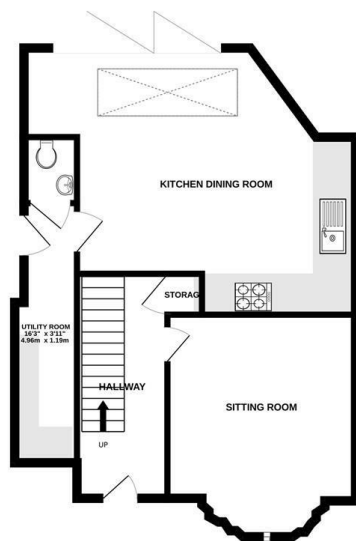
Upstairs there are two double bedrooms on the first floor, with a modern house bathroom and single guest room/office. The second floor contains the master bedroom and ensuite shower room.

Lidgett Park Grove is a quiet residential road off Lidgett Lane, which has regular bus routes towards Leeds centre. Roundhay Park is less than 0.5 miles away,

£1,995 Per month

www.fletcherprops.com

GROUND FLOOR
576 sq.ft. (53.5 sq.m.) approx.



1ST FLOOR
387 sq.ft. (36.0 sq.m.) approx.



2ND FLOOR
252 sq.ft. (23.4 sq.m.) approx.



TOTAL FLOOR AREA : 1215 sq.ft. (112.9 sq.m.) approx.

Whilst every attempt has been made to ensure the accuracy of the floorplan contained here, measurements of doors, windows, rooms and any other items are approximate and no responsibility is taken for any error, omission or mis-statement. This plan is for illustrative purposes only and should be used as such by any prospective purchaser. The services, systems and appliances shown have not been tested and no guarantee as to their operability or efficiency can be given.

Made with Metropix ©2025

Energy Efficiency Rating		Current	Potential
Very energy efficient - lower running costs			
(92 plus) A			
(81-91) B			
(69-80) C			
(55-68) D			
(39-54) E			
(21-38) F			
(1-20) G			
Not energy efficient - higher running costs			
England & Wales		EU Directive 2002/91/EC	

Environmental Impact (CO ₂) Rating		Current	Potential
Very environmentally friendly - lower CO ₂ emissions			
(92 plus) A			
(81-91) B			
(69-80) C			
(55-68) D			
(39-54) E			
(21-38) F			
(1-20) G			
Not environmentally friendly - higher CO ₂ emissions			
England & Wales		EU Directive 2002/91/EC	